

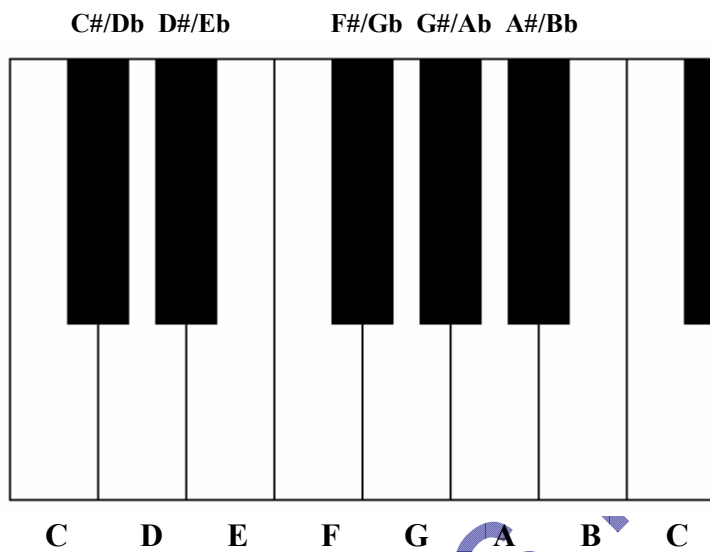


Introduction to Piano Keyboard and Stave

Keyboard

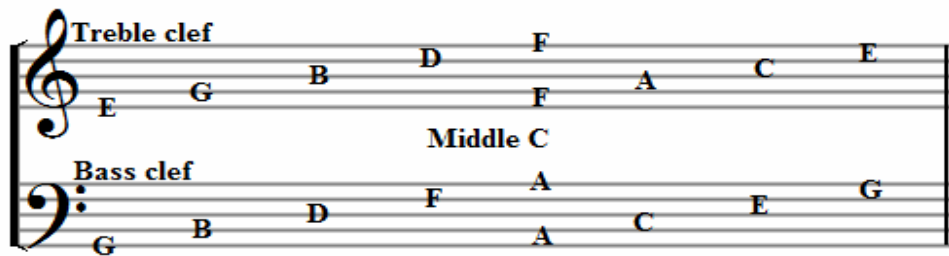
These are the names of the notes on the piano keyboard. The white keys (called naturals) are shown by the letters at the bottom of the diagram and the black keys (sharps and flats) are shown by the letters at the top of the diagram.

The symbol # indicates that the note is a sharp and the symbol b indicates that the note is a flat. A sharp note takes its name from the natural note to the left of it, and a flat note takes its name from the natural note to the right of it.



Music notation

This shows the position of each note as it is written on the staff. These positions correspond to specific notes on the piano.



Acronyms

These acronyms are useful for remembering the positions of the notes on the staff.

Treble clef

Lines: Every Good Boy Deserves Fruit

Spaces: F A C E

Bass clef

Lines: Good Boys Deserve Fruit Always

Spaces: Apes Can Eat Grapes