

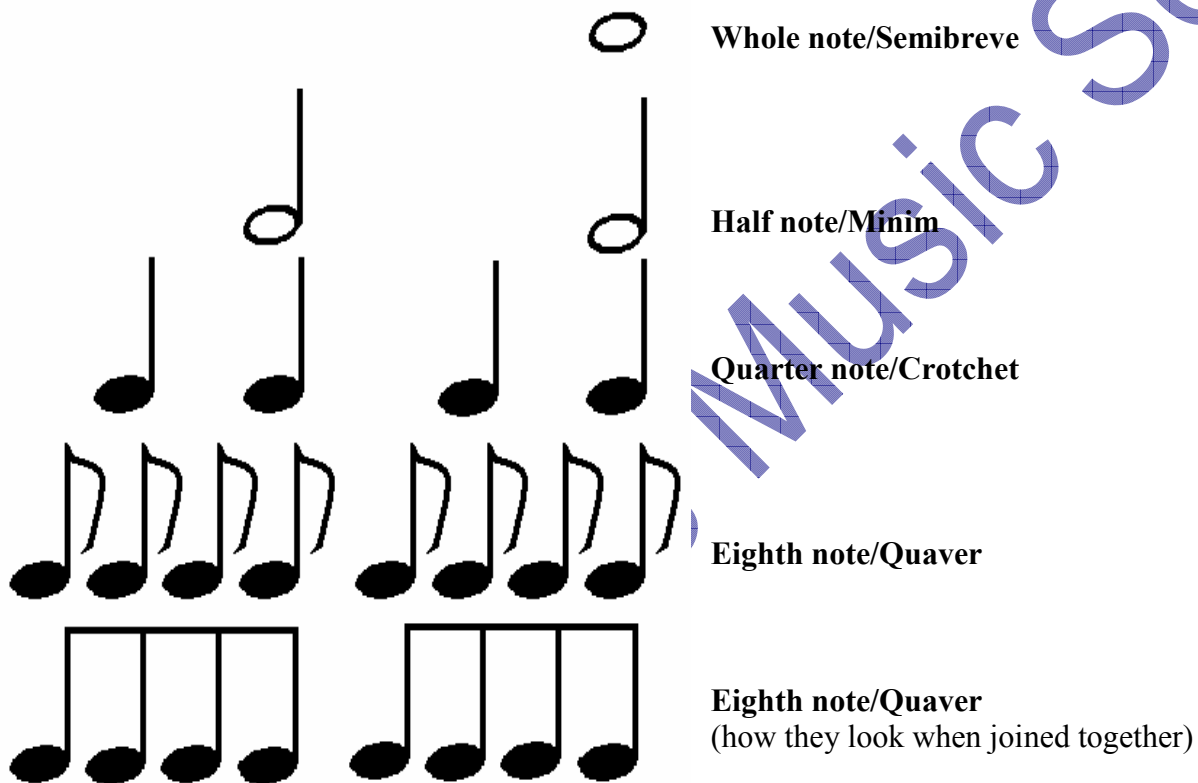


Basic Note Values

The shape and structure of a note will show you how long it lasts. These are the four most common note values.

In this example, the semibreve is the longest note and the quaver is the shortest. As you can see, the semibreve is basically just an oval. As the notes get shorter, the more intricate they become - adding stems and tails, and filling in the centre of the note.

There are other notes that last for longer and shorter amounts of time, but those are more advanced and are not essential knowledge for the beginner musician.



Rhythm

The staff tells us what notes to play and where to play them on the instrument. It shows us whether a note is high or low. Rhythm tells us when to play a note and how long to play it for. It tells us whether we should hold a note down for a long time, or play it quickly.

We can use the note values we have learned above to play many different types of music and rhythms.